



**KelTec
PR-5.7™**

SAFETY, INSTRUCTION & PARTS MANUAL



⚠ WARNING: Read this manual carefully before loading or using the KelTec PR-5.7™.

TABLE OF CONTENTS

Safety Information and Warnings.....2

Overview6

 I. Description6

 II. Safety.....7

 III. Nomenclature.....7

 IV. Specifications8

 A. Overall8

 B. Measurements9

 V. Ammunition.....9

Operating Instructions11

 I. Loading Internal Magazine and Chambering..... 11

 II. Loading the Stripper Clips..... 12

 III. Sights 18

 IV. Firing..... 18

 V. Unloading 19

Breakdown21

 I. Disassembly..... 21

 II. Assembly 26

 III. Proper Care..... 30

 A. Maintenance 30

 B. Lubrication 31

 C. Troubleshooting..... 32

Customer Service34

 I. Service/Repair 34

 II. Warranty 35

Exploded View and Parts.....38

SAFETY INFORMATION AND WARNINGS

This manual explains the function and handling of the KelTec PR-5.7 and warns of the potential dangers, including death or serious personal injury that can result from the unsafe use of the KelTec PR-5.7. This manual should always accompany and transfer with the KelTec PR-5.7.

Regardless of firearm experience, you must **read this entire manual carefully** before loading or firing the KelTec PR-5.7. This manual provides basic instructions on the proper handling and functioning of the KelTec PR-5.7. The safety of yourself and others will depend on you following the instructions and warnings in this manual. Always use safe firearm practices. If you are unfamiliar with firearms, take a course in the safe handling of firearms from a qualified firearms instructor.

This manual contains several safety warnings and instructions preceded with **⚠ WARNING**, **⚠ CAUTION**, or **NOTICE**. These signal words are designed to draw your attention to important safety information.

⚠ WARNING indicates a hazardous situation which, if not avoided, could result in death or serious injury.

⚠ CAUTION indicates a hazardous situation which, if not avoided, could result in minor or moderate injury.

NOTICE addresses safety practices not related to personal injury.

⚠ WARNING Firearms can cause death or serious personal injury. Safety must be the prime consideration of anyone who handles firearms.

⚠ WARNING The KelTec PR-5.7 is designed to function reliably with proper care and knowledgeable use. Do not use your KelTec PR-5.7 unless you fully understand how to safely operate it.

⚠ WARNING It is your responsibility to use safe firearm handling habits. Accidents are the result of violating the rules of safe firearms handling as well as the warnings noted in this manual.

⚠ WARNING Always seek a doctor's advice if you are taking medication and/or are pregnant to be sure that you are able to shoot and handle a firearm safely. Never drink alcoholic beverages and/or take drugs before or while shooting. Your vision and judgment could be seriously impaired, making your firearm handling unsafe.

⚠ WARNING Always treat a firearm as though it were loaded.

⚠ WARNING Always keep the muzzle pointed in a safe direction. Never point a firearm at anyone or anything you do not intend to shoot.

⚠ WARNING Always keep your finger off the trigger and outside the trigger guard until you have made the decision to fire.

⚠ WARNING Always wear hearing and eye protection when using your firearm.

⚠ WARNING Never accept a firearm without checking the magazine and the chamber to make sure that it is unloaded.

⚠ WARNING Do not trust the extractor to remove the cartridge from the chamber. Always check to confirm that it is empty.

⚠ WARNING Always make sure the KelTec PR-5.7 is unloaded and shows a cleared chamber before handing it to another person.

⚠ WARNING Never allow a firearm to be used by individuals who are not familiar with its safe operation and rules of firearm safety.

⚠ WARNING Never alter or modify the KelTec PR-5.7 as this could cause it to malfunction, create a dangerous condition, and void the warranty.

⚠ WARNING Be sure all accessories are compatible with the firearm, properly installed on the firearm, and that the accessories do not interfere with safe operation of the firearm. Follow the instructions provided by the accessory manufacturer to the extent those instructions are not inconsistent with the warnings and instructions contained in this manual.

⚠ WARNING If the KelTec PR-5.7 is dropped or forcefully struck, have it inspected by Kel-Tec CNC Industries, Inc. as it could be damaged and may not function properly.

⚠ WARNING Never load a firearm except immediately before shooting. When transporting your firearm, be sure your firearm is unloaded and the action is open.

⚠ WARNING Never store or transport firearms and ammunition together. Keep firearms and ammunition locked up and away from children and other unauthorized persons.



WARNING Always secure firearms from children. You are responsible for the firearm's safety and security.



CAUTION Most ammunition contains lead in the projectile and/or primer. Discharging firearms in poorly ventilated areas, cleaning firearms, or handling ammunition may result in exposure to lead and other substances known to cause birth defects, reproductive harm, cancer, and other serious physical injury. Have adequate ventilation at all times. Wash hands thoroughly after exposure.

The KelTec PR-5.7 was tested, carefully inspected, and packaged before it left the factory. Kel-Tec CNC Industries, Inc. cannot control what happens to the KelTec PR-5.7 after it leaves the factory. Therefore, carefully examine the KelTec PR-5.7 when you acquire it to ensure that it is unloaded and undamaged. If you do not understand any of the warnings and instructions in this manual, or have any problems operating the KelTec PR-5.7, contact Kel-Tec CNC Industries, Inc. at:

KEL-TEC CNC INDUSTRIES, INC.

1505 Cox Road
Cocoa, FL 32926

Telephone Number: 321-631-0068 Toll free: 1-800-515-9983

Hours: M-F 9am-6pm EST (excluding holidays)

Website: <https://www.keltecweapons.com>

Email: customerservice@keltecweapons.com

The current version of the instruction manual can also be downloaded at:
<https://support.keltecweapons.com/owners-manuals>

OVERVIEW

I. DESCRIPTION

The KelTec PR-5.7 (Pistol Rotary Barrel) is a locked breech, semi-automatic pistol chambered in 5.7 x 28mm. The double stack internal (non-removable) magazine holds 20 rounds plus an additional round can be carried in the chamber of the pistol. The KelTec PR-5.7 is hammer fired and of conventional double-action only. The pistol has a custom molded “gator grip” pattern with a textured finish for additional control.

NOTICE The KelTec PR-5.7 serial number is engraved on the aluminum receiver and is visible in a window on the left side of the grip as shown in *Figure 1*.



Figure 1. Serial Number Window

II. SAFETY

The KelTec PR-5.7 is double-action only and does **not** have a manual safety. The hammer is securely held by the hammer block and will only fire by deliberately pulling the trigger to disengage the hammer block.

WARNING The KelTec PR-5.7 does not have a manual safety. It will fire when loaded and the trigger is pulled.

WARNING Never completely rely on mechanical safety mechanisms as they can fail or become unintentionally disengaged. A mechanical safety is **not a substitute** for safe firearm handling practices.

III. NOMENCLATURE



Figure 2. Side View

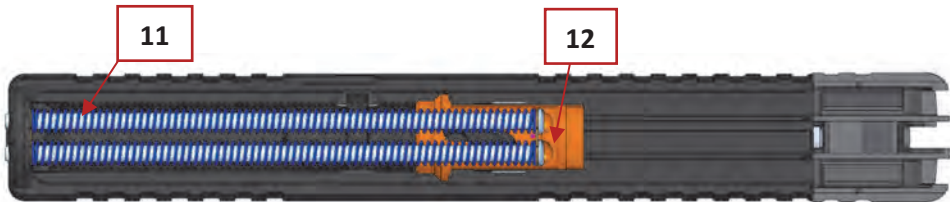


Figure 3. Slide Assembly, Bottom View

1 – FRONT SIGHT	7 – LOADED CHAMBER INDICATOR
2 – SLIDE	8 – SLIDE STOP
3 – ACCESSORY RAIL	9 – REAR SIGHT
4 – BARREL	10 – MAGAZINE CAPACITY INDICATOR
5 – TRIGGER	11 – RECOIL SPRING ASSEMBLY
6 – FLOOR PLATE	12 – TRUNNION

IV. SPECIFICATIONS

A. Overall

Caliber	5.7 x 28mm
Operation	Locked Breech, Rotary Barrel
Mode of Fire	Semi-Automatic
Trigger System	Hammer Fired, Double-Action
Magazine Capacity	20+1 Rounds

B. Measurements

Weight

Pistol Unloaded	13.86	oz.	393	g
Pistol Loaded (20 rounds)	19	oz.	540	g

Dimensions

Overall Length	7.16	in	182	mm
Barrel Length	4	in	101.8	mm
Width (widest point)	.937	in	23.8	mm
Height	5	in	127	mm
Rifling	1:7	in	1:177	mm

Force

Trigger Pull	4.5	lbs	20	N
--------------	-----	-----	----	---

V. AMMUNITION

The KelTec PR-5.7 pistol has been designed and chambered to operate with standard 5.7 x 28mm cartridges. Use only new, commercially manufactured ammunition. Never use non-standard, reloaded or damaged cartridges. Use only brass-cased ammunition. Any other ammunition is considered non-standard and use of it may cause functioning issues and void the warranty of the firearm.

NOTICE **5.7 x 28mm cartridges have a dry coating and can stick in the chamber if it is not lubricated.** Some manufacturers use a non-dry or oily coating that may attract dirt or debris to the casings, potentially causing malfunctions in a locked-breech weapon. It is imperative for the chamber to be clean, free of debris, and lightly lubricated to avoid malfunctions.

KelTec firearms are manufactured from high quality materials and will provide extended service life. However, all warranties, expressed or implied, are voided and Kel-Tec CNC Industries, Inc. will not be liable for property damage or personal injury and consequential damages, if faulty, non-standard, or reloaded ammunition is used in any KelTec firearm.

Not all ammunition produces the same result. We recommend that once you find a brand that functions best, continue using it. Kel-Tec CNC Industries, Inc. does not recommend using hand loads, reloads, remanufactured ammunition, foreign or military surplus ammunition of unknown or questionable quality. The use of this type of ammunition will: void the warranty, introduce dangerous conditions, and possibly cause death or serious injury if the ammunition is not made to the proper specifications.



Never use non-standard ammunition or cartridges with pressures or dimensions exceeding industry standards. Failure to follow this warning may result in serious injury or death and damage to your firearm.

OPERATING INSTRUCTIONS

I. LOADING INTERNAL MAGAZINE AND CHAMBERING



After firing several rounds, the barrel and any parts in contact with it become **extremely hot. Touching them could result in burns or injury.**

The KelTec PR-5.7 has a 20 round internal magazine and can also hold one additional round in the chamber. As a note, the KelTec PR-5.7 does not have a magazine release due to the internal magazine design.

1. To start loading, pull the slide all the way back to lock it open with the slide stop. Insert a cartridge just below the feed lips (*Figure 4*), then press the cartridge down and back until it is properly seated and retained in the magazine. Add subsequent rounds by placing them on top of the secured round and repeating the previous process.

**Ensure First Round
Seats to the Right
in the Magazine**

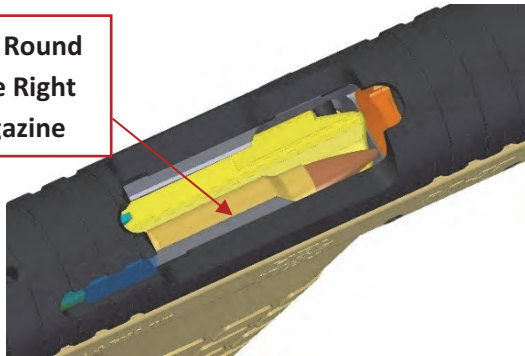


Figure 4. First Round in Magazine

NOTICE If the first round fails to properly seat as shown in *Figure 4*, it will result in limited capacity and / or feeding failures of the weapon.

2. When the magazine is fully loaded, the bottom section of the follower will protrude through the floor plate as a visual indicator.

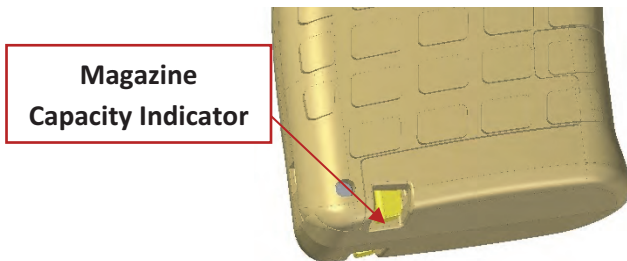


Figure 5. Engaged Magazine Capacity Indicator

3. Optional: The KelTec PR-5.7 may also be loaded with 10 round stripper clips. With the slide in the locked back position, insert the stripper clip into the ejection port and apply downward pressure to the top of the stripper clip as shown in the figure below (see next section on stripper clips).

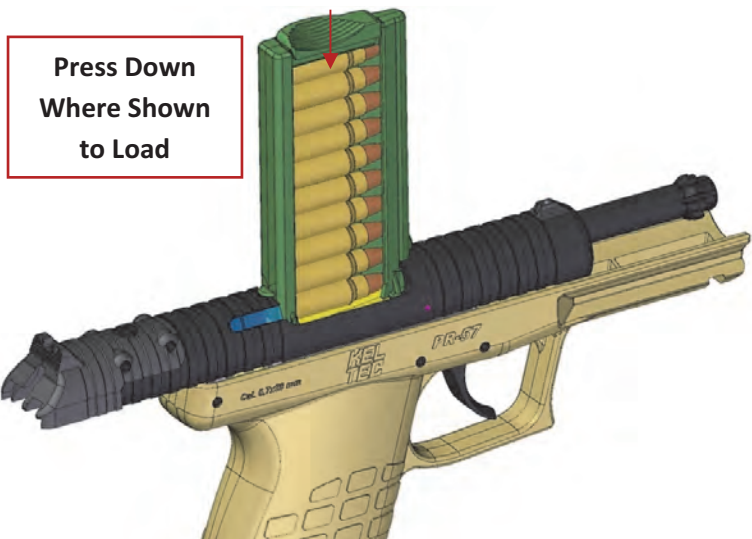


Figure 6. Stripper Clip Loading

4. With your non-shooting hand, firmly pull the slide all the way back and release. Releasing the slide on its own power will allow it to properly chamber a round. Slowly guiding it closed may cause a feeding malfunction.
5. A cartridge will be visible through the Loaded Chamber Indicator when properly loaded.

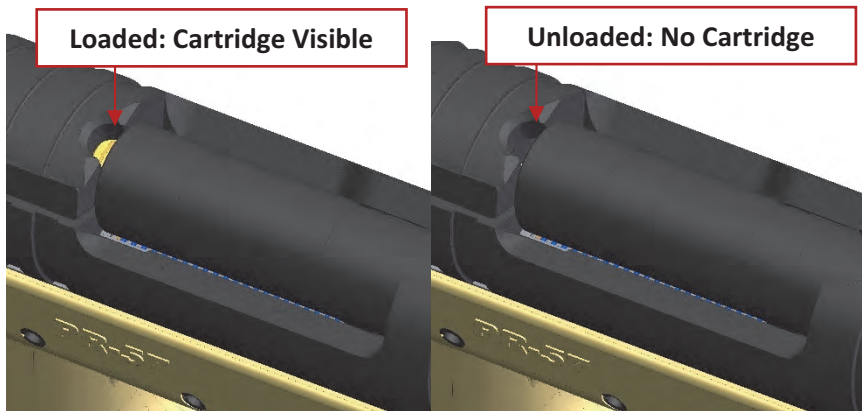


Figure 7. Loaded Chamber Indicator

CAUTION

The slide stop is used to lock the slide open for loading and unloading of ammunition and to inspect the chamber; the slide stop is not a “slide release”. Failing to pull the slide fully rearward before releasing it forward can lead to feeding issues.

WARNING

The KelTec PR-5.7 has a slide as well as other moving parts. During loading, firing, or inspection, make sure that fingers, body parts, or other objects are clear from the path of any moving mechanical parts.

WARNING

Always check that the ammunition is clean, undamaged, and the correct caliber for the pistol. Forcing substandard ammunition into the chamber could result in damage to property, injury, or death.

⚠ WARNING Always position the pistol in a safe position when loading and unloading the firearm.

⚠ WARNING Keep your finger straight and out of the trigger guard while chambering a round to prevent a negligent trigger pull.

⚠ WARNING Always ensure the slide is completely closed before discharging your firearm. If the slide is not completely closed, the pistol can still fire and may cause an unsafe event.

⚠ CAUTION Springs and sliding parts can pinch skin and loose clothing.

II. STRIPPER CLIP

The KelTec PR-5.7 can be loaded with stripper clips designed for the firearm. The clip is designed to hold ten (10) rounds of 5.7 x 28mm cartridges and the plunger is used to assist in pressing the cartridges into the magazine.

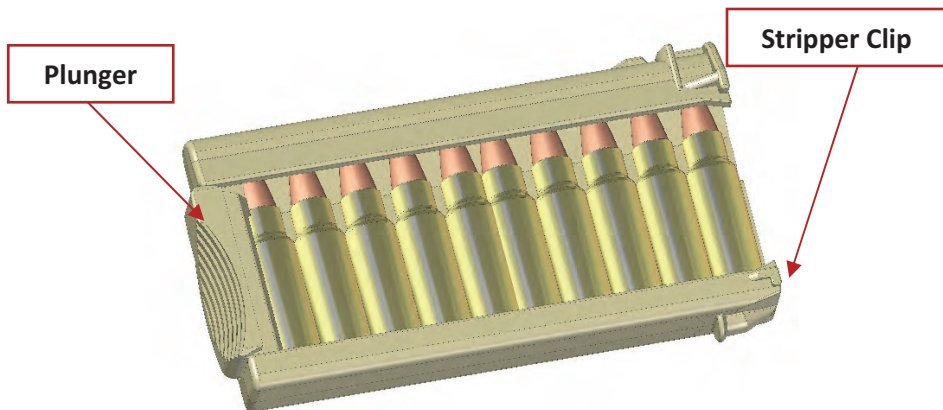


Figure 8. Stripper Clip Components

⚠ WARNING Never discharge a firearm without proper shooting glasses and ear protection.

⚠ WARNING Never shoot until you are sure of your foreground, target and background.

⚠ WARNING Never shoot at a hard surface, such as a rock, or a liquid surface, such as water, because a bullet may ricochet and travel in any direction, striking you or someone else.

⚠ WARNING When firing on a target range, be alert and follow the range officer's commands. Always be aware of other people so that they cannot accidentally walk into the line of fire. Make sure your "audience" is always at least 6 feet behind you, not next to you, when firing.

⚠ WARNING Always carry the KelTec PR-5.7 unloaded while on a range until preparing to fire. Always keep the KelTec PR-5.7 pointed towards the backstop and/or safe direction when loading, firing, and unloading it.

⚠ WARNING The KelTec PR-5.7 ejects spent cases upwards to the right side of the slide. Even after limited firing, spent cases are hot and can cause burns when they come in contact with unprotected skin.

⚠ WARNING The KelTec PR-5.7 is a pistol. Make sure you have a firm grasp of the grip, using two hands, and at no time extend fingers or body parts into the line of fire.

⚠ CAUTION The KelTec PR-5.7 has a moving slide. During firing or inspection, make sure fingers or body parts are safe from this path or any moving mechanical parts.

III. SIGHTS

The KelTec PR-5.7 comes from KelTec with a fixed traditional three dot sighting system.

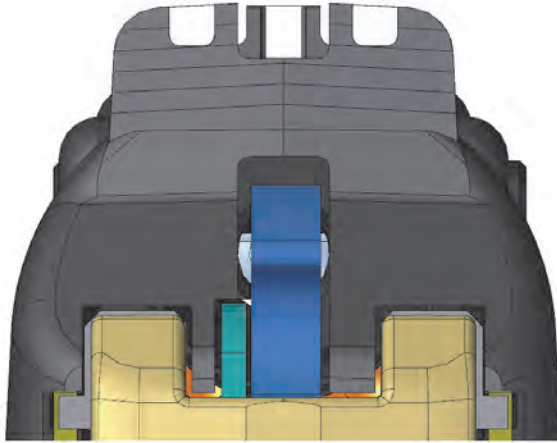


Figure 9. Sighting System

IV. FIRING

Once all warnings are understood and implemented, prepare to fire:

1. Center the front sight in between the rear sight notch and align the dots. Take aim at the target while also taking notice of the target's backdrop.



WARNING The KelTec PR-5.7 is now able to fire upon trigger pull.

2. Place a firm grip on the pistol.
3. Place trigger finger into the trigger guard.
4. Slowly squeeze the trigger until a round is fired. Upon firing, the slide moves rearward extracting and ejecting the empty case, then returns to the forward position feeding another round automatically. Release the trigger and you are ready to fire another round.
5. To fire another round, squeeze the trigger. This sequence can be repeated until the last round has been fired, at which point the slide will lock back.



WARNING If the last round was not fired, there will be a live round in the chamber.



WARNING Do not rapidly fire more than three (3) magazines through the KelTec PR-5.7 without allowing the firearm to cool.

V. UNLOADING



WARNING Always make sure the muzzle is pointed in a safe direction when unloading.

To safely unload or clear the firearm:

1. Point the KelTec PR-5.7 in a safe direction and pull back the slide to eject any round that may still be in the chamber. As the slide closes forward, another round will feed and subsequently be chambered.
2. Repeat Step 1 as many times necessary.
3. Visually and physically ensure your pistol is now safely unloaded.

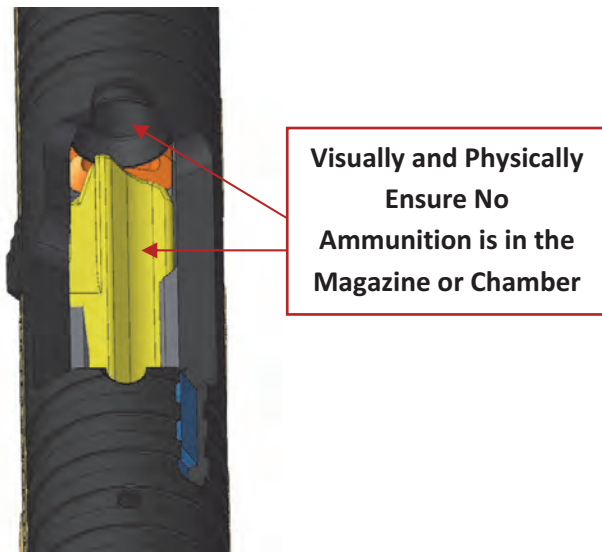


Figure 10. Unloading Inspection

BREAKDOWN

I. DISASSEMBLY



Never rely on your memory to determine whether the KelTec PR-5.7 is loaded or unloaded.



Always wear safety glasses when disassembling the KelTec PR-5.7 to protect your eyes from components that are under spring tension.



If the KelTec PR-5.7 has been fired, wait a sufficient amount of time for the components to cool before attempting disassembly. Failure to do so may result in burns.

1. To disassemble the KelTec PR-5.7, first check to ensure the pistol is unloaded and the chamber is empty. Return the slide to the forward position.
2. Push the trigger forward to release the barrel lock.



Figure 11. Push Trigger Forward to Disassemble

3. Push the slide forward to remove from the grip assembly. If the slide is unable to be removed, it is possible the trigger was not pushed far enough forward to release the barrel lock.
4. Lift up the recoil springs near the trunnion and remove from the slide. The trunnion can now be removed.

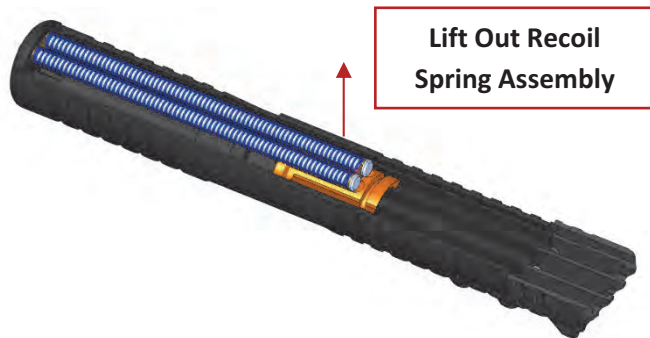


Figure 12. Remove Spring Assembly



Figure 13. Remove Trunnion

5. Push the barrel forward and lift up to remove from the slide.



Figure 14. Remove Barrel

6. Optional (for magwell cleaning): To remove the floor plate, spring, and follower, tap out the pin with a suitable hammer and 1/8" punch, as shown in *Figure 15 (Next Page)*.



The follower and floor plate are under pressure from the magazine spring. This magazine spring force will be suddenly released when the floor plate is pushed forward. Ensure the bottom of the grip is pointed in a safe direction and safety glasses are worn prior to attempting to remove the floor plate.

7. Slide the floor plate forward to release the magazine spring and follower.



Figure 15. Floor Plate Removal

8. This is as far as Kel-Tec CNC Industries, Inc. recommends field stripping the KelTec PR-5.7. From this point, the cleaning procedure can be implemented if necessary.



Further disassembly should only be performed by a certified gunsmith or Kel-Tec CNC Industries, Inc. Attempting further disassembly may void your warranty.

II. ASSEMBLY



Always wear safety glasses when reassembling the KelTec PR-5.7 to protect your eyes from components under spring tension.

Assembly is essentially disassembly in reverse; however, some steps warrant extra attention.

1. If the optional step of removing the floor plate was performed, reinstall the follower into the magwell, followed by the magazine spring. Be sure the magazine spring is installed around the rib in the floor plate and with the tallest section of the spring at the rear of the follower, as shown in *Figures 16 & 17*.

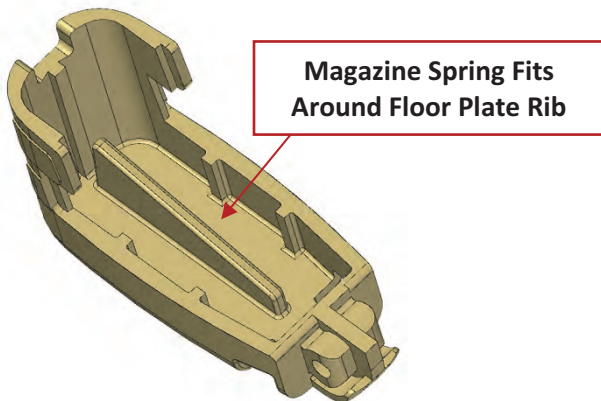


Figure 16. Floor Plate Rib

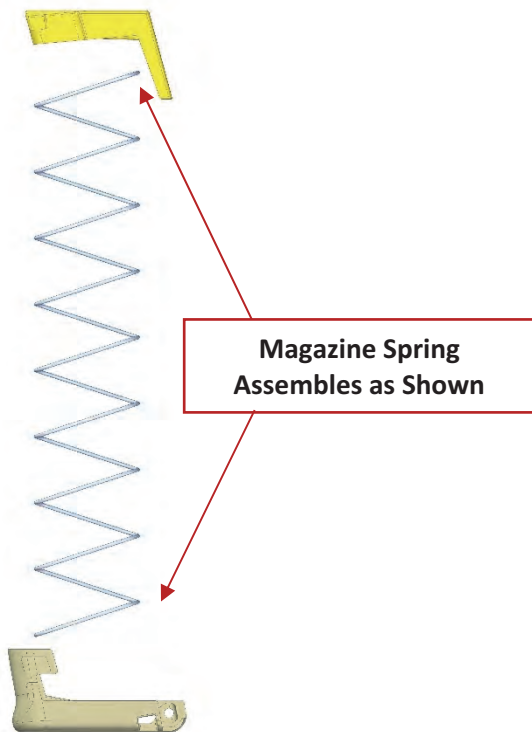


Figure 17. Magazine Spring Position

2. Install the barrel (blue part) into the slide (black part) and align the barrel lugs with the barrel lug cuts. Place the trunnion (orange part) over the barrel cam lug as pictured below.

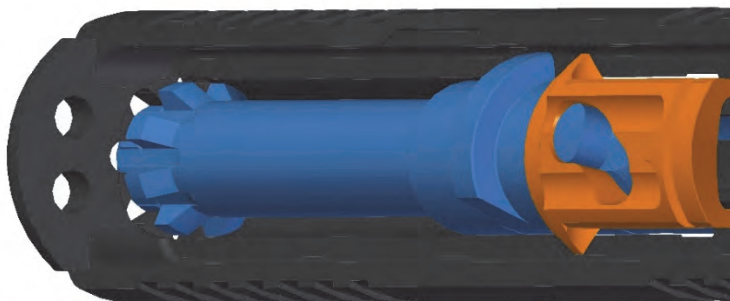


Figure 18. Slide Assembly, Bottom View

3. Insert the tapered end of the recoil spring assembly into the holes in the muzzle end of the slide. Apply pressure and rest the opposite end of the recoil spring assembly on the trunnion as pictured below.

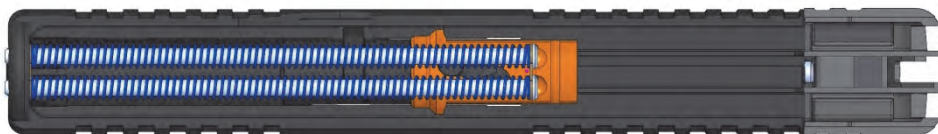


Figure 19. Recoil Spring Installation

4. As shown in *Figure 20*, push the slide onto the frame while pressing the slide stop down. Keep the slide held open and push the trigger forward until you hear a CLICK; release the trigger to engage the barrel lock. Now release the slide and verify slide is reassembled to the firearm.



Figure 20. Slide Locked Back for Reassembly

III. PROPER CARE

A. Maintenance

⚠ WARNING Always wear safety glasses when cleaning the KelTec PR-5.7 to protect your eyes from cleaning materials.

⚠ WARNING Always make sure that no ammunition is located in the area where you clean the KelTec PR-5.7. Cleaning solvents can affect the primer and powder in ammunition which may cause it to malfunction. This could result in a bullet being pushed into the barrel of the KelTec PR-5.7 and getting stuck. Firing another round with a bullet stuck in the barrel could cause the barrel to burst, and result in death or serious personal injury and/or damage to the KelTec PR-5.7.

⚠ WARNING If the KelTec PR-5.7 has been fired, wait a sufficient amount of time for the components to cool before attempting disassembly. Failure to do so may result in burns.

Your KelTec PR-5.7 is a precision instrument and will provide a lifetime of faithful service if it is properly cleaned and maintained. It is recommended that you clean your KelTec PR-5.7 after every shooting session or more frequently if needed.

⚠ WARNING Be sure to unload and clear your KelTec PR-5.7 (see Unloading) before performing any cleaning or maintenance procedures.

NOTICE Only use commercially available gun solvent and gun oil or a cleaner-lubricant-preserved. Use of improper cleaning fluids could damage the KelTec PR-5.7 and void the warranty.

1. Disassemble the KelTec PR-5.7 (see Disassembly).
2. Thoroughly clean all exterior areas of the slide and receiver with solvent and brush.
3. Brush the barrel bore and chamber with a good powder removing solvent and bore brush. Wipe the areas clean with patches or a swab.
4. Using a small brush dipped in solvent, remove all deposits from around the breech of the barrel as well as all adjacent areas that have been subjected to powder or primer residue.
5. Clean the integral magazine area with solvent and brush if needed.

B. Lubrication

After cleaning the entire gun, use a cloth to apply a light coating of high-quality gun oil to all interior and exterior metal surfaces and wipe clean. It is recommended to brush a thin coating and manually cycle the slide back and forth to check the function of the firearm. If any parts are damaged, badly worn, or the firearm does not work correctly, the firearm should not be fired and should be returned to KelTec for service immediately.



WARNING Discharging a firearm with oil, grease, or any other material even partially obstructing the bore could result in serious injury, damage to your firearm, and death.

C. Troubleshooting

Proper functioning of your firearm is directly related to proper maintenance and care, as well as the quality of ammunition you use. If in the unlikely circumstance your KelTec PR-5.7 malfunctions, we have included a list of several suggested remedies below.

Failure to Fire (FTFR):

Also known as a dud or misfire. This occurs when the round feeds correctly in the chamber, the trigger is pulled, but the primer in the round is not discharged. Point the barrel of the KelTec PR-5.7 in a safe direction. For either scenario, wait at least 1 minute prior to clearing the firearm.

- After waiting 1 minute, eject the dud round and set aside. Then, proceed to fire as normal. Fire one round to see if the failure repeats. If the failure does not repeat, fire a couple more, and if they are without failure, the FTFR round that was set aside is a faulty round and should be **disposed of properly**. If the FTFR continues to occur with successive rounds, then it is likely that a thorough cleaning is required to ensure proper contact between the firing pin and cartridge.

Failure to Feed (FTFD):

This type of failure occurs when the cartridge does not fully seat in the chamber.

- It is most likely that the chamber, feed ramp, recoil spring and/or the magazine/spring need to be cleaned. Properly clean and lubricate the pistol.
- Some pistols may have trouble firing lighter weight 5.7 x 28mm ammunition, specifically those with 27 grain bullets.

Failure to Eject (FTEJ):

When an empty cartridge leaves the chamber, but does not fully exit the pistol, it is a FTEJ.

- Pull back the slide to the locked position. The cartridge should eject and a new round should be able to enter the chamber. Proceed to fire and see if the problem repeats. If so, the chamber and slide may need to be cleaned.

Failure to Extract (FTEX):

This failure occurs when the spent cartridge is not removed from the chamber.

- A faulty round could expand and get stuck in the chamber. The barrel could also be dirty and require cleaning. Additionally, check the extractor for visible damage and make sure that the spring is working.

In the case of malfunctions beyond the scope of the stated failures, contact KelTec service at: www.keltecweapons.com/contact

CUSTOMER SERVICE

I. SERVICE/ REPAIR



Always make sure the KelTec PR-5.7 is unloaded before sending it in for service.

If your KelTec PR-5.7 ever requires adjustment, updates or repair, it should be returned to Kel-Tec CNC Industries, Inc.'s Service Department. The unloaded firearm should be sent prepaid shipping charges to:

Kel-Tec CNC Industries, Inc.
ATTN: Service Department
1505 Cox Road
Cocoa, FL 32926

Contact your chosen carrier to determine their requirements for shipping firearms. In certain states, your firearm may have to be returned to you through a local, federally licensed firearms dealer. Be sure to securely package your firearm and insure it for its full value, as Kel-Tec CNC Industries, Inc. is not responsible for firearms lost or damaged during shipment.

To ensure prompt service and handling, include a brief letter including your name, address, telephone number, the serial number of your KelTec PR-5.7, and your request(s). Once your firearm has been received, we will provide a quote of all charges for KelTec PR-5.7s not under warranty or requests outside the scope of the KelTec warranty standards. NOTE: We will not begin work until we receive your approval. Charges for adjustments, refinishing, and repairs are payable by American Express, Discover, Master Card, or Visa. No COD or personal checks are accepted.

II. LIFETIME WARRANTY

Subject to the terms, conditions and limitations outlined below, Kel-Tec CNC Industries, Inc. guarantees your KelTec PR-5.7 against defects in materials and workmanship for the lifetime of the pistol.

To make a claim under this warranty, return your KelTec PR-5.7 pursuant to the instructions above. For repairs that are covered by the warranty, Kel-Tec CNC Industries, Inc. will pay the transportation and insurance charges to return your KelTec PR-5.7.

A. LIMITATIONS OF WARRANTY

The warranty will be void if any of the following occur:

(1) the instructions in the Instruction Manual are not followed;

(2) the KelTec PR-5.7 or any of its parts are altered or modified from their original design;

(3) damage is caused by misuse, abuse or improper maintenance; or

(4) the KelTec PR-5.7 is disassembled beyond the breakdown procedure listed in the Instruction Manual.

There are no warranties which extend beyond the description on the face hereof.

The sole and exclusive remedy pursuant to this warranty is the repair or replacement of the KelTec PR-5.7, at the sole discretion of Kel-Tec CNC Industries, Inc.

The implied warranties of merchantability and fitness for a particular purpose are expressly disclaimed.

All disclaimers and limitations of liability shall still apply even if the limited remedy of repair and replacement fails of its essential purpose.

In States where permitted, Kel-Tec CNC Industries, Inc. assumes no liability for incidental or consequential damage or for incidental expenses.

Any action against Kel-Tec CNC Industries, Inc. based on an alleged breach of this warranty must be brought within one (1) year of the claimed breach.

Kel-Tec CNC Industries, Inc.'s liability for breach of warranty shall be limited to repair or replacement of the KelTec PR-5.7, at the sole discretion of Kel-Tec CNC Industries, Inc.

The purchaser assumes all liability resulting from unsafe handling or any action that constitutes a violation of any applicable laws or regulations. Kel-Tec CNC Industries, Inc. will not be responsible for injuries or damages resulting from careless handling, unauthorized or unsafe adjustments or modifications, the use of non-standard, defective or improper ammunition, the use of incompatible or improperly installed accessories, corrosion, neglect, fire damage, water damage, theft, abuse, ordinary wear and tear, or unreasonable use of the KelTec PR-5.7. Under no circumstances shall Kel-Tec CNC Industries, Inc. be responsible for incidental or consequential damages with respect to economic loss, injury or property damage, whether as a result of breach of express or implied warranty, negligence or otherwise.



KelTec PR-5.7



- 104 BARREL
- 150 SLIDE
- 160 RECOIL SPRING GUIDE
- 162 RECOIL CONNECTOR
- 163 TRUNNION CONNECTOR
- 164 RECOIL SPRING
- 166 RECOIL SPRING RETAINER
- 170 TRUNNION
- 172 EXTRACTOR
- 174 EXTRACTOR PLUNGER
- 176 EXTRACTOR SPRING
- 180 FIRING PIN
- 182 FIRING PIN SPRING
- 184 SLIDE COVER
- 186 FRONT SIGHT
- 200 GRIP
- 201 GRIP BOTTOM
- 202 FRAME (EXCHANGE ONLY)
- 205 MAG LINER
- 206 MAG SPRING
- 208 FOLLOWER
- 210 TRIGGER
- 212 TRIGGER BAR AXIS
- 214 TRIGGER SPRING
- 216 TRIGGER BUSHING
- 218 TRIGGER BAR



NOTES

KELTEC®



1505 Cox Rd Cocoa FL 32926
p: 800.515.9983 f: 321.631.1169
e: info@keltecweapons.com



KELTECWEAPONS.COM